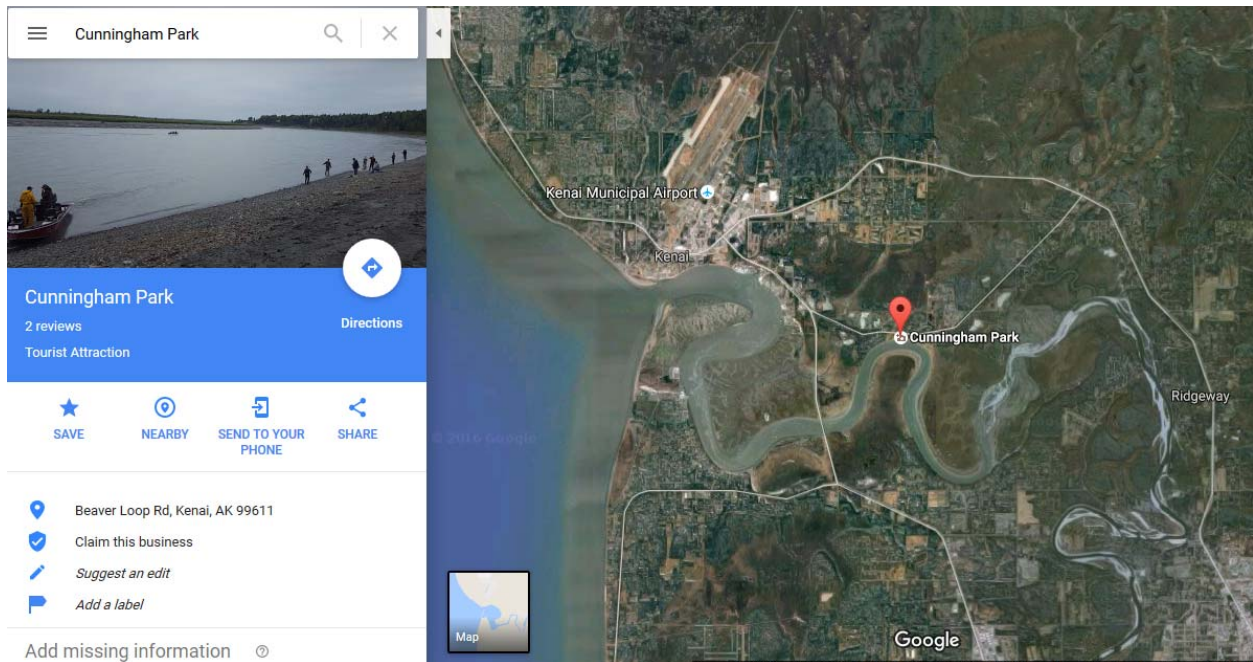


Public Fishing on the Kenai River

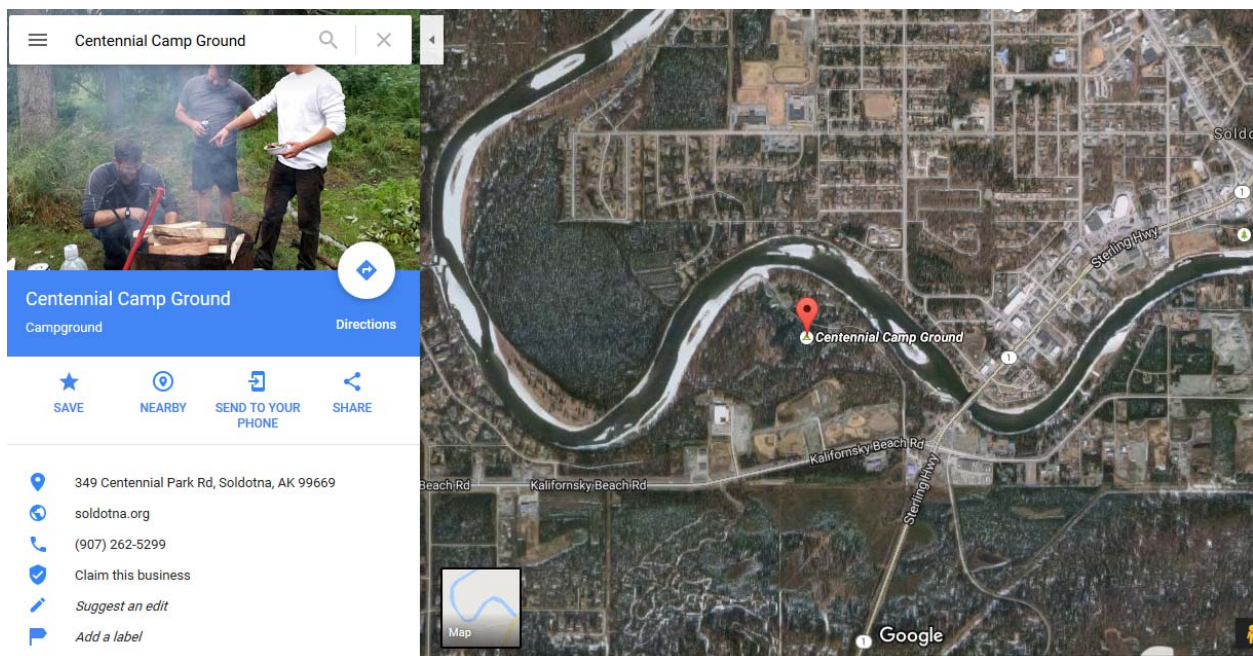
Kenai River - Cunningham Park

<http://www.alaska.org/detail/kenai-river-cunningham-park>



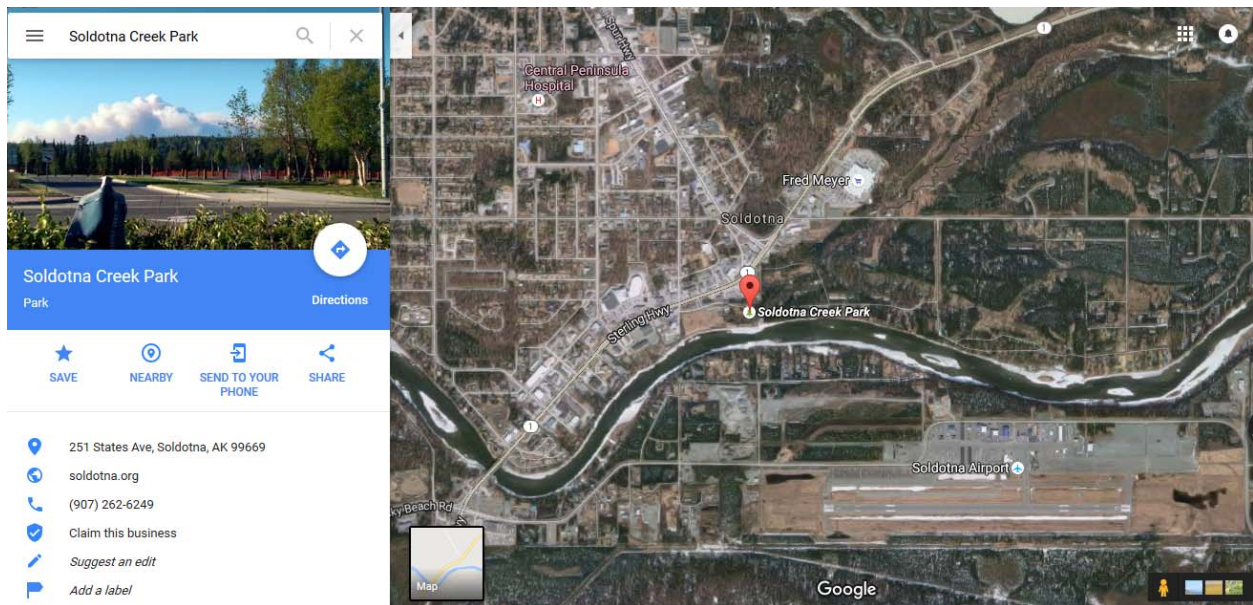
Centennial Park

<http://www.soldotna.org/departments/parks-and-recreation/parks-amenities/centennial-park>



Soldotna Creek Park

<http://www.soldotna.org/departments/parks-and-recreation/parks-amenities/soldotna-creek-park>



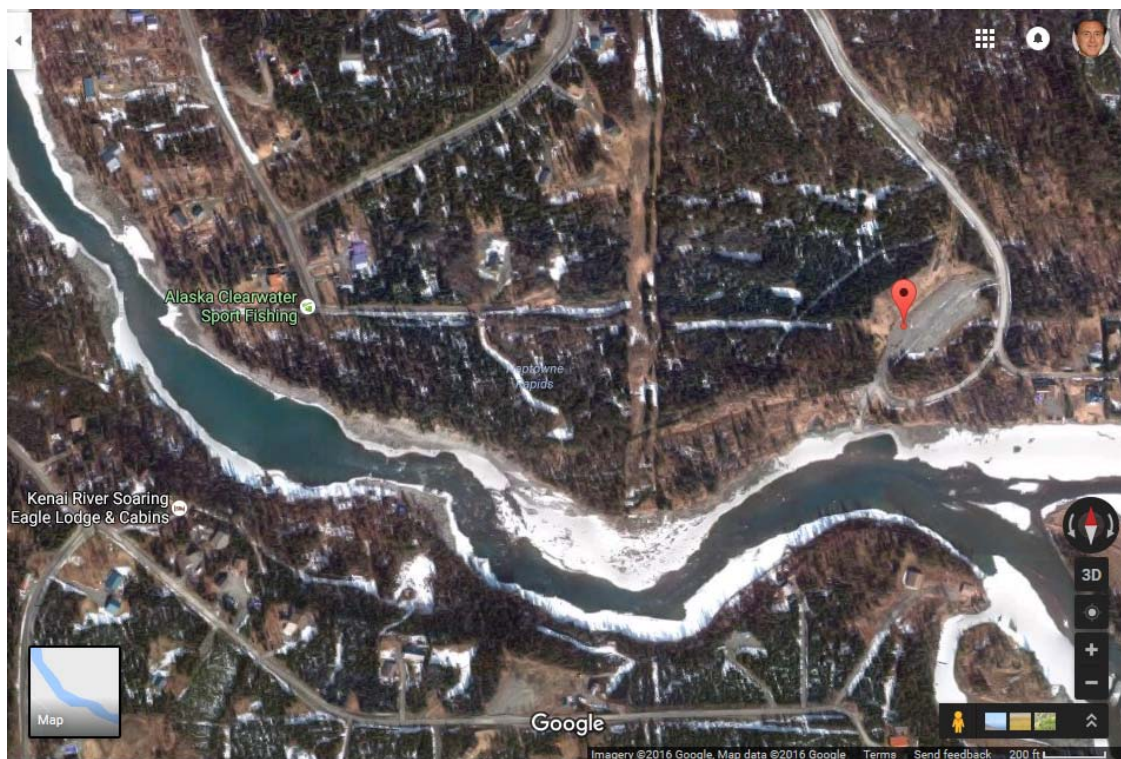
Funny River Campground Park

<http://dnr.alaska.gov/parks/aspunits/kenai/funnyriversrs.htm>

Mile 12 Funny River Road Directions: From Sterling Highway, Travel 12 miles to Piper Place.

Bings Landing Campground & Day Use Area

<http://www.alaska.org/detail/kenai-river-bings-landing>



Soldotna Funny River Rotary Park

<http://soldotna.org/departments/parks-and-recreation/parks-amenities/rotary-park>

Located near the Soldotna Municipal Airport, there is a small parking area at the head of the three-quarter mile maintained trail that leads to the river. The trail is handicap accessible with assistance. Restrooms are located in the same area as the parking lot. **Rotary Park in Soldotna** is accessed via Funny River Road located across the bridge at the traffic light. Turn towards Kenai Supply and follow the road 2.5 miles to the park. There is a 625 foot long boardwalk provided for bank fishing.